



INDOFINE Chemical Company, Inc.

121 Stryker Lane, Bldg. 30, Suite 1 • Hillsborough, NJ 08844 • U.S.A.

Phone: (908) 359-6778 • FAX: (908) 359-1179

website: www.indofinechemical.com

e-mail: chemical@indofinechemical.com

CERTIFICATE OF ANALYSIS

Cat No.: C0117

Product: CLINDAMYCIN HCl

CAS Number: [21462-39-5]

Lot Number: 1003015

Chemical Formula: $C_{18}H_{34}Cl_2N_2O_5S$

Molecular Weight: 461.44

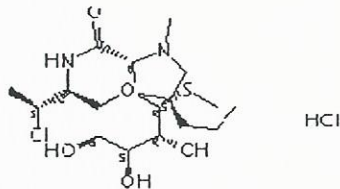
Melting Point: 136-137.3°C

Appearance: White crystalline powder

Solubility: Soluble in water

Storage: Store at 0-5°C

Assay (HPLC): 97.76%





INDOFINE Chemical Company, Inc.

121 Stryker Lane, Bldg. 30, Suite 1 • Hillsborough, NJ 08844 • U.S.A.

Phone: (908) 359-6778 • FAX: (908) 359-1179

website: www.indofinechemical.com

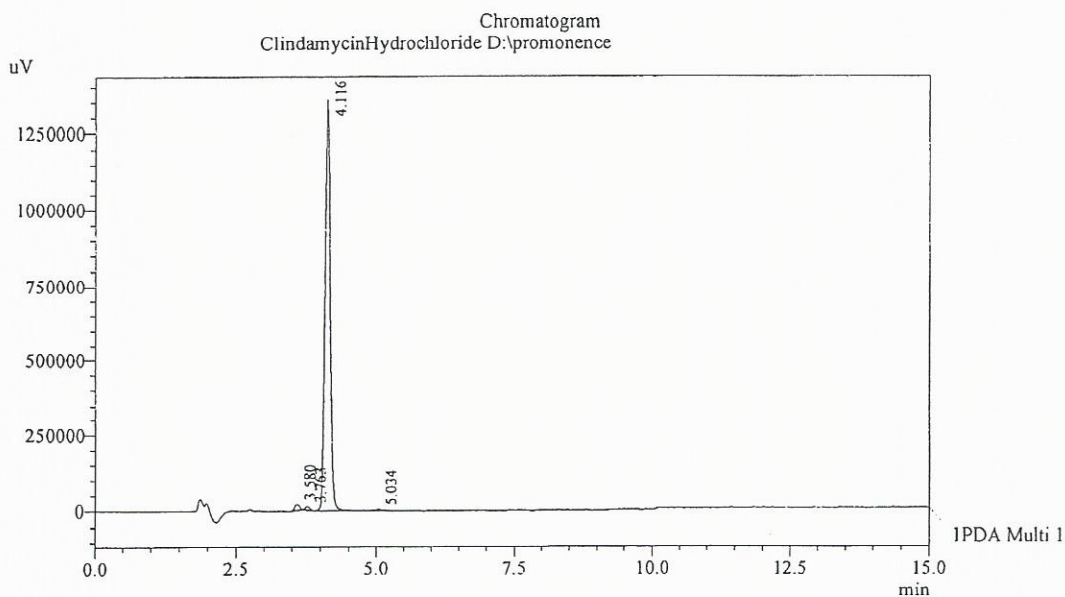
e-mail: chemical@indofinechemical.com

HPLC ANALYSIS

Acquired by : Madhuri
Sample Name : ClindamycinHydrochloride
Sample ID : Indofine LOT No-1003015
Injection Volume : 20 uL
Data Filename : 080410F.lcd
Method Filename : Linear Isocratic.M.lcm

Cat. No.: C0117
Product: Clindamycin hydrochloride
Lot No.: 1003015

Description:
Column : Inertsil C-18, 250X4.6mm 5.0µm
Flow : 1.000mL/min.
Mobile Phase : A(20% 0.01% KH₂PO₄Buffer PH-9) : B(80% ACN)



1 PDA Multi 1 / 210nm 4nm

PeakTable

PDA Ch1 210nm 4nm

Peak#	Ret. Time	Area	Height	Area %
1	3.580	114919	20792	1.278
2	3.763	57328	11403	0.638
3	4.116	8791403	1357795	97.768
4	5.034	28437	4149	0.316
Total		8992087	1394139	100.000